

# RC electronics application

Application for setting up RC electronics devices



Manual version: 1.1

RC Electronics

[support@rc-electronics.eu](mailto:support@rc-electronics.eu); <http://www.rc-electronics.eu>

# Contents

---

- Introduction..... 3
  - Key features ..... 3
  - Important facts to know ..... 3
- Using the application ..... 4
- Uploading flight data to RCmodelspot.com platform ..... 5
- Revision history ..... 6

## Introduction

---

Application primary function is to set up parameters of RC Electronics devices and to download flight data from them. Communication links supported by the app are USB connection and BLE connection (depending on device being used). At the moment there is Android version which can be downloaded from Google Play. We are working also on iOS solution which will come to Apple store by the end of 2024. **iOS application will support only BLE communication, so devices which are requiring USB connection cannot be used with iOS app!**

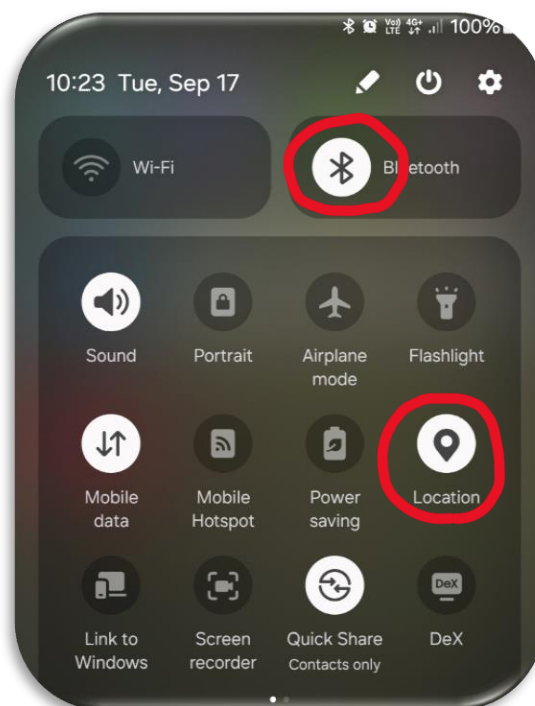
Major feature of the app is connectivity to [www.rcmodelspot.com](http://www.rcmodelspot.com) platform which gives users option of direct upload of flight to the platform for later review.

### Key features

- USB + BLE connectivity
- [www.rcmodelspot.com](http://www.rcmodelspot.com) support
- Automatic check of latest firmware notification for RC electronics devices

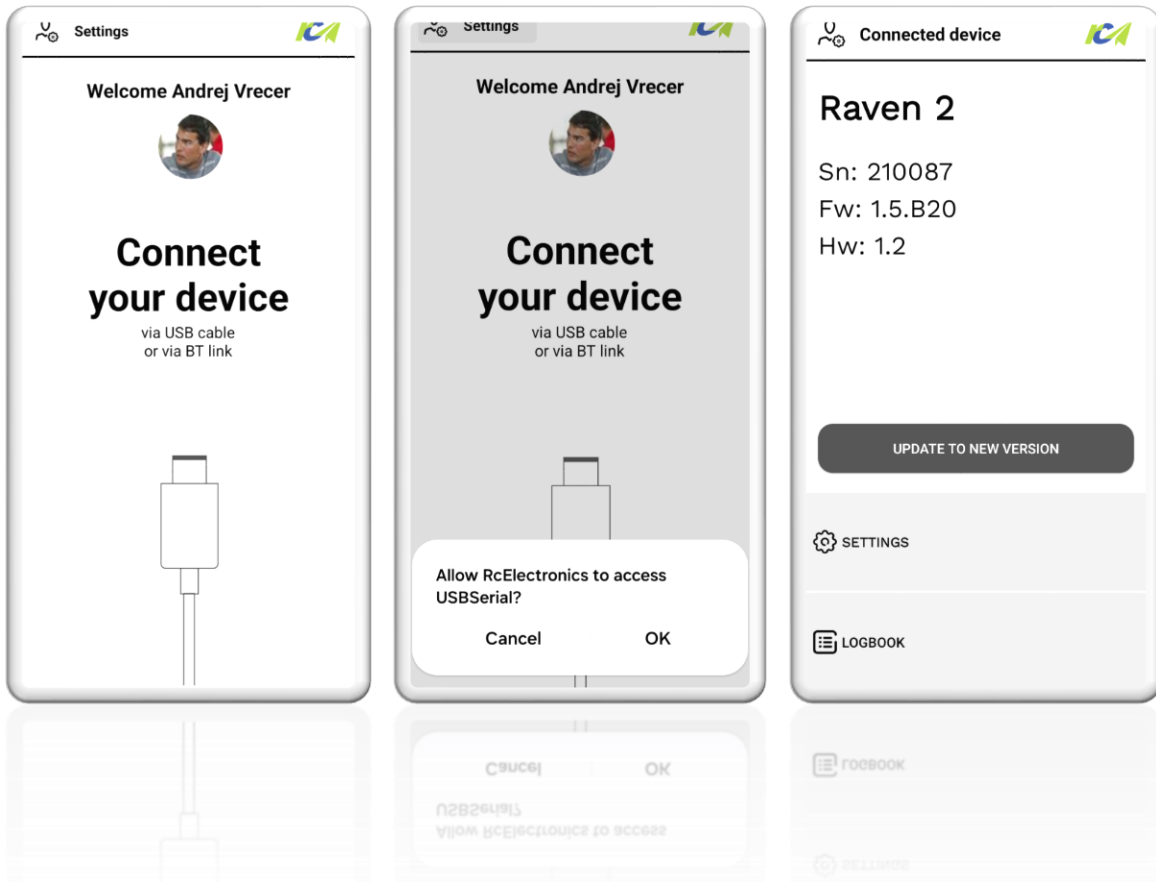
### Important facts to know

**For Android users: As the app is using BLE communication, user must allow fine location permission, must enable BT module and enable location service. If all are not enabled, then BLE communication will not work!**



## Using the application

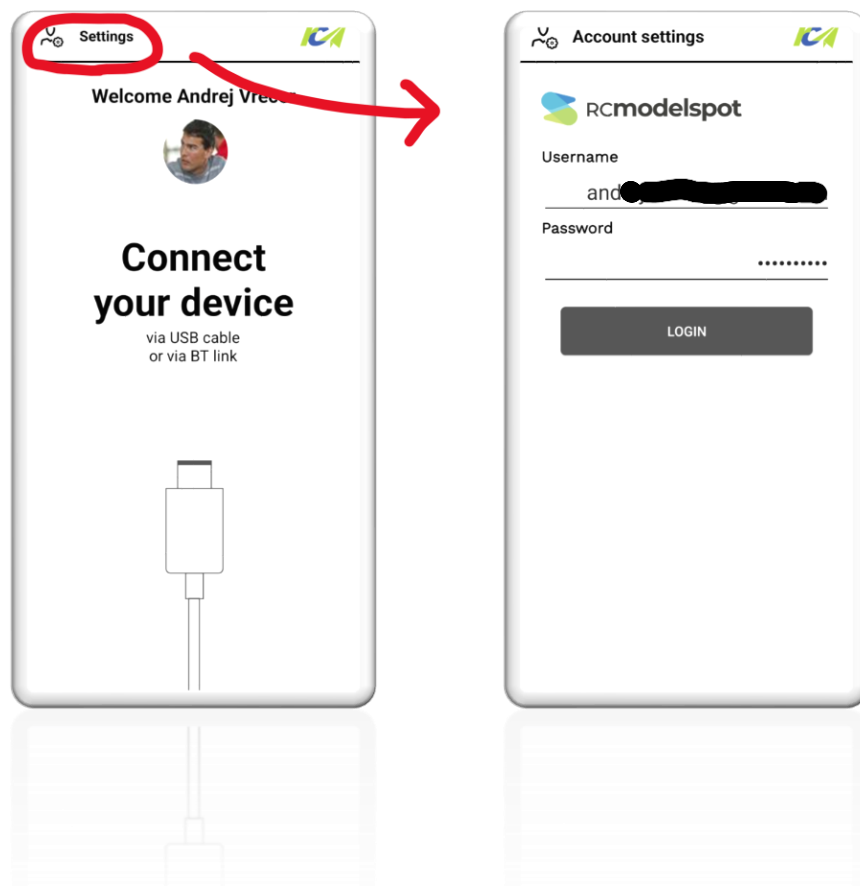
When device is connected via USB cable, user must confirm USB connection. After confirmation user will see device info and will be able to set up device settings. Lower example is for Raven 2 device. When BLE device is used, just turn on device and app will connect to it automatically. No BT pairing is needed! For a device specific settings and information please refer to device manual.



## Uploading flight data to RCmodelspot.com platform

**Please note! To successfully upload flight to RCmodelspot.com platform, user must create an account on [www.rcmodelspot.com](http://www.rcmodelspot.com) platform and then enter his login username and password into application settings.**

First check if your RCmodelspot.com login data is entered into application settings. To enter settings, press Settings button on main screen of the application. Once Username and Password are entered, press LOGIN button. If login is successful, button name will change to LOGOUT and you will see your RCmodelspot.com name and avatar picture on main page.



Then go to device Logbook, select flight and press download button. When flight is uploaded, you will receive link to the flight for a review.

## Revision history

---

September 2024	Initial release of user manual.
Oktober 2024	Changed login procedure – press of login button in settings User avatar from rcmodelspot.com is visible on main page indicating logged in status